

INSTALLING BBME FIRMWARE.

To update your TR102 unit to be compatible with the advanced BBMe system you must install our proprietary firmware.

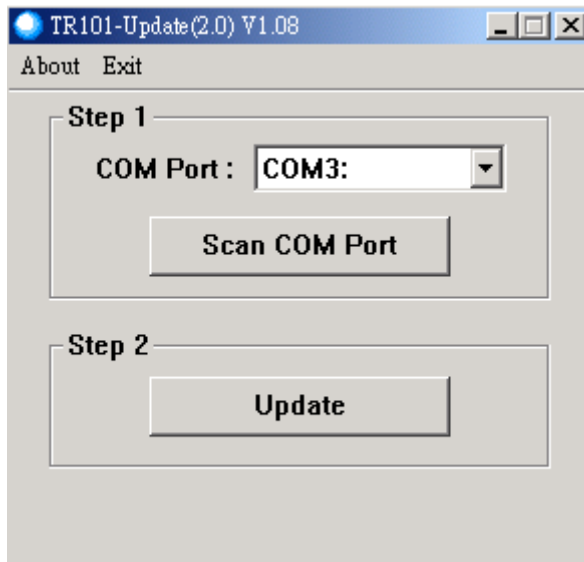
The folder “**Driver**” has the drivers needed to communicate with your TR102 unit. There are 2 files:

PL-2303 Driver Installer.exe – Install this file if you have windows XP

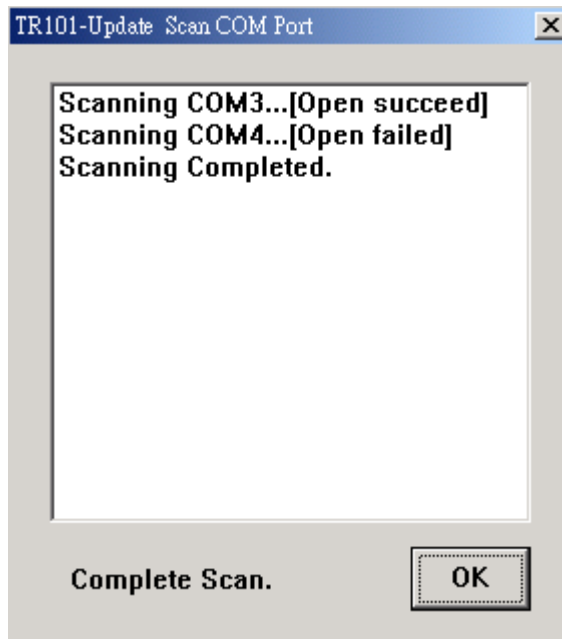
PL-2303 Vista Driver Installer.exe – Install this file if you have Windows Vista

Once installed you can run the update program you can find this file in the **TR102-BBMe** update folder please run the “**TR102-BBMe Update.exe**”

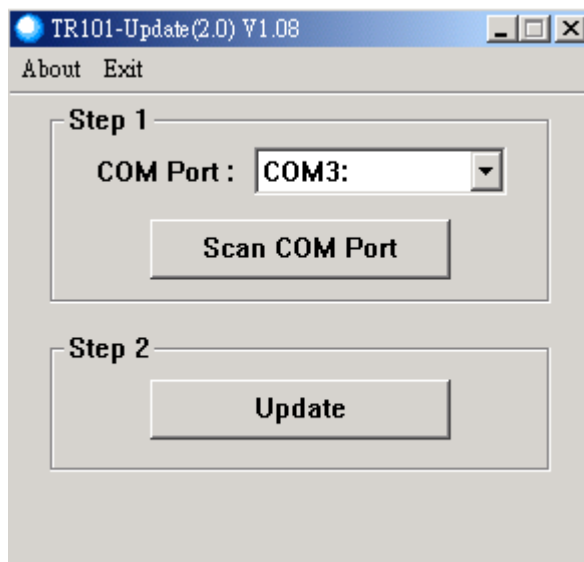
1. Connect the USB cable to the computer and the other end to your TR102 unit.
2. Start your TR102 unit and wait till the program has started full (this may take up to 30 seconds).
3. Hold down the phone pickup button for about 5 seconds. At this point all three LEDs should be flashings this signals that the unit is ready to be updated.
4. Run the application **TR102-BBMe Update.exe** you should get the below program to start:



5. Press Scan COM Port the program should find the correct comm. Port that your TR102 is connected to. If not please recheck the above procedures to make sure everything is operating correctly



- 6 Once you have successfully found a comm. Port you can press **update** to start. It will take about 2 minutes before the update is successful.





6. Turn off the TR102 and turn on it again. Now you can go to www.bigbrotherme.co.nz to complete the registration process and begin using your unit live.